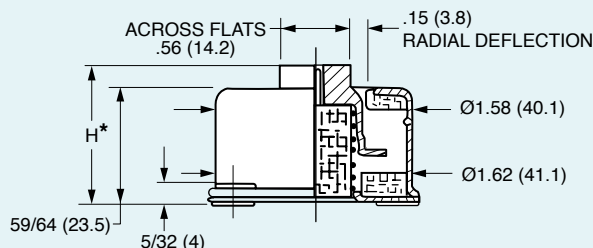


Steel Spring and Mesh Mounts – To 10 lbs.

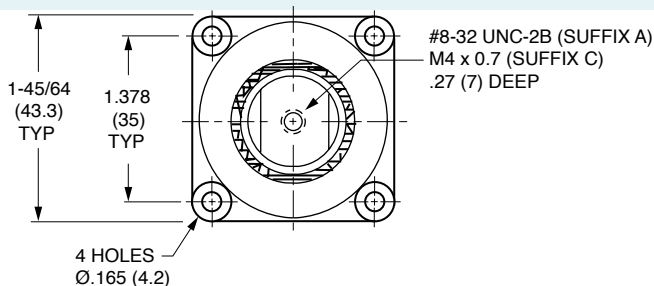
www.vibrationmounts.com Phone: 516.328.3662 Fax: 516.328.3365

- **MATERIAL:** Housing – Aluminum Alloy, Anodized
Eyelets – Brass, Tin Plated
Isolators – Stainless Steel Spring and Mesh

- **CORROSIVE ENVIRONMENT • STAINLESS STEEL MESH**
• **FOR LOADS OF .5 TO 10 POUNDS (0.25 TO 4.6 kgf)**



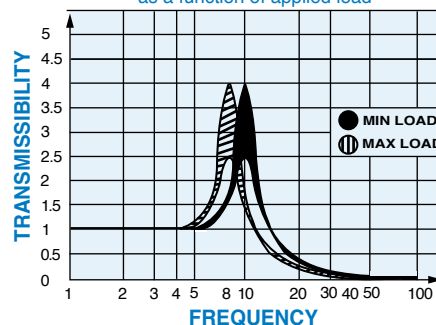
NOTE: MAX BOLT LENGTH INTO CAP IS .276 (7)



NOTE: Dimensions in () are mm.



TYPICAL TRANSMISSIBILITY CURVE
as a function of applied load



DYNAMIC CHARACTERISTICS

Ratio between transverse and axial stiffness (vertical) approximately 1:2.5
Natural frequency = 7 to 11 Hz vertical and 4.5 to 7 Hz transverse depending on load, for a displacement input $\pm .014$ (0.35).
Maximum displacement input $\pm .016$ (0.4).
Transmissibility $\leq 4:1$.
Conforms to MIL-E-5400

TEMPERATURE RANGE: -94°F to +347°F
(-70°C to +175°C)

LOADING LIMITATIONS

Prior to abutting snubber, load corresponding to a continuous acceleration of at least 2 G.
Loads corresponding to at least 10 G may be accepted without subsequently affecting the mount performance.
Maximum displacement of the suspended unit under limiting loads $\pm .197$ (5).

APPLICATIONS

- AIRCRAFT
- MARINE
- MOBILE
- ROTATING MACHINES

CATALOG NUMBER DESIGNATION:

V 1 0 Z 1 9 - 7 0 1

Load Code

Cap Code

Thread

A #8-32UNC-2B

C M4 x 0.7

Load Code	Static Load		Weight (Approx.)	
	lb.	kgf	oz.	kg
1	.55 – 1.00	0.25 – 0.45		
2	.80 – 1.80	0.35 – 0.8		
3	1.50 – 3.40	0.7 – 1.5	1.4	0.04
4	2.20 – 5.60	1 – 2.55		
5	5.60 – 10.10	2.55 – 4.6		

Cap Code	H* - Height			
	Free		Max. Load	
	in.	mm	in.	mm
S – Short	1.50	38	1.09	27.7
L – Long	1.61	41	1.21	30.7

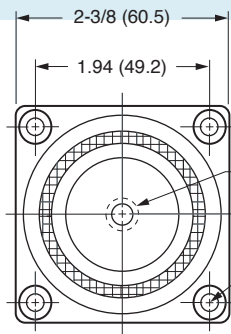
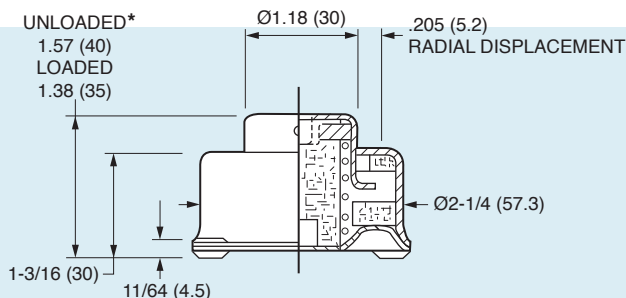


Steel Spring and Mesh Mounts – To 242 lbs.

www.vibrationmounts.com Phone: 516.328.3662 Fax: 516.328.3365

- **MATERIAL:** Housing – Aluminum Alloy, Anodized
Eyelets – Brass, Tin Plated
Isolators – Stainless Steel Spring and Mesh

- **CORROSIVE ENVIRONMENT • STAINLESS STEEL MESH**
• **FOR LOADS OF 1.5 TO 242 POUNDS (0.7 TO 110 kgf)**



NOTE:
MAX. ATTACHING BOLT LENGTH
INTO CAPS .275 (7)

1/4-20 UNC-2B (SUFFIX A)
1/4-28 UNF-2B (SUFFIX B)
M6 (SUFFIX C)
3/8-24 UNF-2B (SUFFIX D)

4 HOLES
Ø.197 (5)

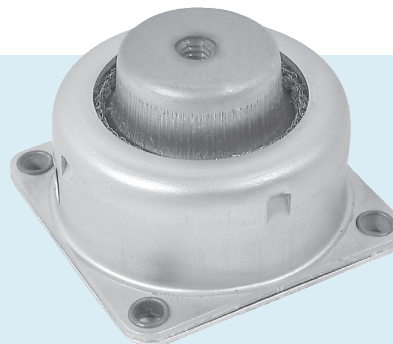
NOTE: Dimensions in () are mm.

DYNAMIC CHARACTERISTICS

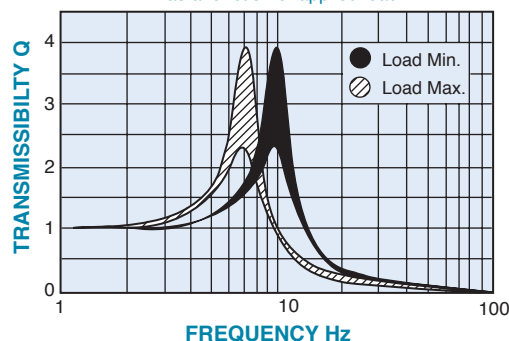
In accordance with curve 1 of spec MIL-C-172.
Ratio between transverse and axial stiffness
(vertical): approximately 1:2.5.
Natural Frequency = 7 to 10 Hz vertical and 4.5 to 6 Hz
transverse depending on load for a displacement
input of $\pm .030$ (0.75).
Maximum displacement input $\pm .031$ (0.8)
Transmissibility: $\leq 4:1$
Conforms to MIL-E-5400C

TEMPERATURE RANGE: -94°F to +347°F (-70°C to +175°C)

WEIGHT: 3.53 - 4.41 oz. (100-125 g) approx.



TYPICAL TRANSMISSIBILITY CURVE
as a function of applied load



LOADING LIMITATIONS

Just prior to abutting snubber, load corresponding to a continuous acceleration of at least 2 G.
Loads corresponding to at least 10 G may be accepted without subsequently affecting the mount performance.
Maximum displacement of the suspended unit under limiting loads $\pm .236$ (6).

APPLICATIONS

- AIRCRAFT
- MARINE
- MOBILE
- ROTATING MACHINES

Catalog Number				Static Load	
1/4-20 UNC-2B	1/4-28 UNF-2B	M6	3/8-24 UNF-2B	lb.	kgf
V10Z22-7201A	V10Z22-7201B	V10Z22M7201C	—	1.55 – 2.75	0.7 – 1.25
V10Z22-7202A	V10Z22-7202B	V10Z22M7202C	—	2.55 – 5.00	1.15 – 2.3
V10Z22-7203A	V10Z22-7203B	V10Z22M7203C	—	4.40 – 9.90	2 – 4.5
V10Z22-7204A	V10Z22-7204B	V10Z22M7204C	—	6.20 – 12.35	2.8 – 5.6
V10Z22-7205A	V10Z22-7205B	V10Z22M7205C	ΔV10Z22-7205D	9.90 – 19.85	4.5 – 9
V10Z22-7206A	V10Z22-7206B	V10Z22M7206C	—	15.40 – 30.85	7 – 14
V10Z22-7207A	V10Z22-7207B	V10Z22M7207C	ΔV10Z22-7207D	17.65 – 39.70	8 – 18
V10Z22-7209A	V10Z22-7209B	V10Z22M7209C	—	35.30 – 48.50	16 – 22
V10Z22-7210A	V10Z22-7210B	V10Z22M7210C	ΔV10Z22-7210D	44.10 – 72.75	20 – 33
V10Z22-7211A	V10Z22-7211B	V10Z22M7211C	** V10Z22-7211DL	72.75 – 132.30	33 – 60
V10Z22-7212A	V10Z22-7212B	V10Z22M7212C	** V10Z22-7212DL	132.28 – 242.51	60 – 110

*Long cap, unloaded height 1.76 (44.6), loaded height 1.61 (41), available on request.
To order with long cap, add L to the end of Catalog Number.

**Available with long cap only.

ΔTo be discontinued when present stock is depleted.

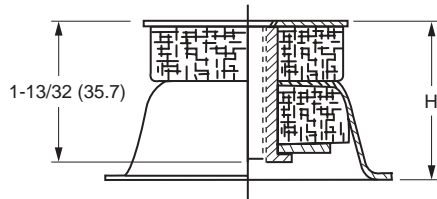
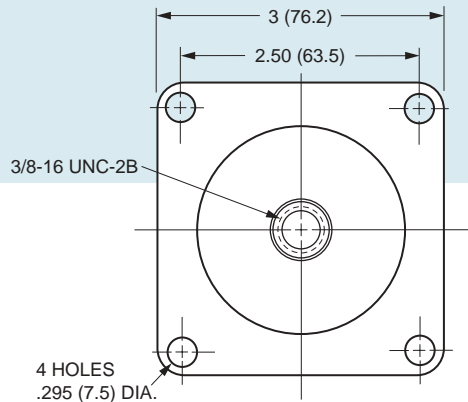


Steel Mesh Mounts – To 1000 lbs.

www.vibrationmounts.com Phone: 516.328.3662 Fax: 516.328.3365

- **MATERIAL:** Cap and Base – Aluminum Alloy
Center Stud – Aluminum Alloy
Isolator – Knitted Stainless Steel Mesh
- **FINISH:** Alocrome 1200 on all Aluminum components

- **FOR LOADS OF 10 TO 1000 POUNDS (4.6 TO 453.5 kgf)**
- **STAINLESS STEEL MESH**



NOTE: Dimensions in () are mm.

APPLICATIONS

- LIGHTWEIGHT MACHINE TOOLS
- PRINTING AND TEXTILE MACHINERY

CHARACTERISTICS

Although normally intended to be used in compression, they will accept accidental tensile loads. The mounts should be fixed to the floor for loads in excess of 220 lb. (99.8 kgf) or when working conditions require it. They will accept compressive loads at least five times the static load.

Catalog Number	Static Load		Natural Frequency Hz	Weight		H - Height			
						Free		Max. Load	
	lb.	kgf		oz.	kg	in.	mm	in.	mm
V10Z28-1641	10 – 20	4.55 – 9.05	13 – 17 For an amplitude of $\pm .012(0.3)$	6.33	0.18	1.91	48.6	1.44	36.6
V10Z28-1642	20 – 50	9.05 – 22.5							
V10Z28-1643	50 – 100	22.5 – 45.35							
V10Z28-1644	100 – 200	45.35 – 90.7							
V10Z28-1645	200 – 500	90.7 – 226.8							
V10Z28-1646	500 – 1000	226.8 – 453.5							



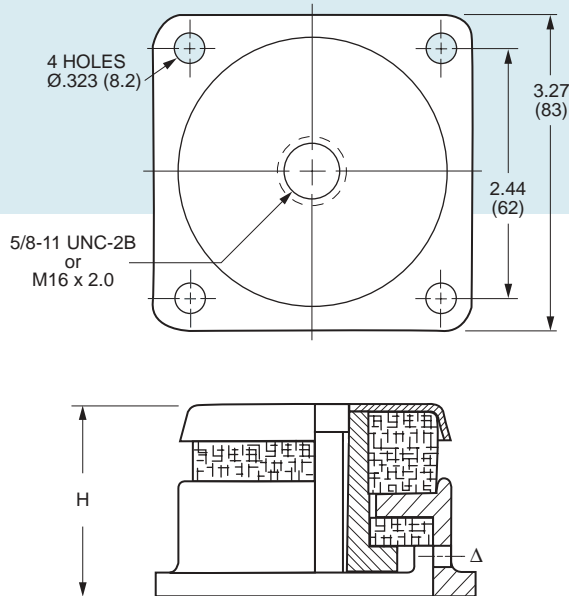
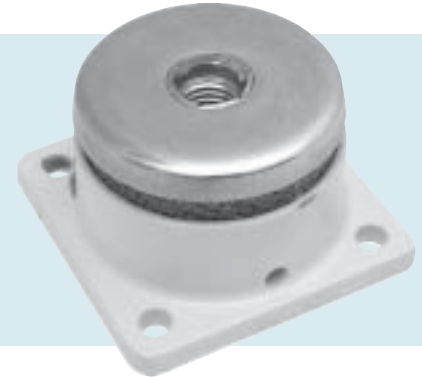
NEW SIZES

Steel Mesh Mounts – To 1598 lbs.

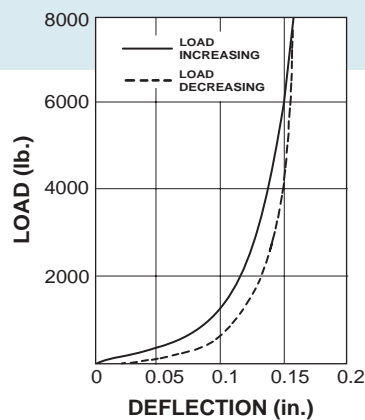
www.vibrationmounts.com Phone: 516.328.3662 Fax: 516.328.3365

- **MATERIAL: Housing** – Machined Casting
Center and Cup Washer are Zinc Plated
and Gold Passivated Mild Steel
- Isolator** – Stainless Steel Mesh

- **CORROSIVE ENVIRONMENT • STAINLESS STEEL MESH**
- **FOR LOADS OF 77 TO 1598 POUNDS (35 TO 725 kgf)**



NOTE: Dimensions in () are mm.



APPLICATIONS

Primarily developed for heavy-duty applications where severe shock forces are encountered, these mounts are especially recommended for vehicle and marine installations where there are high starting torques or reversals of loads. They are capable of withstanding compression loads as high as ten times the static loads and are used for isolating marine fans, mobile engines, generators, instrument consoles and general machine tools such as lathes, milling machines, sloters, broachers, etc.

TEMPERATURE: -94°F to +347°F (-70°C to +175°C)

Catalog Number		Static Load		Natural Frequency	H - Height	
5/8-11 UNC-2B	M16 x 2.0	lb.	kgf	Hz	Free	Loaded
V10Z27-3021A	V10Z27M3021C	77 – 396	35 – 180	14 – 22	1-31/32 (50)	1-13/16 (46)
V10Z27-3022A	V10Z27M3022C	308 – 793	140 – 360			
V10Z27-3023A	V10Z27M3023C	606 – 1598	275 – 725			

Δ An access hole is provided to be able to pin the center section for assembling the mounting bolt or to remove rusted bolt.

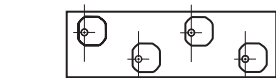
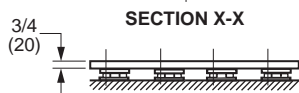
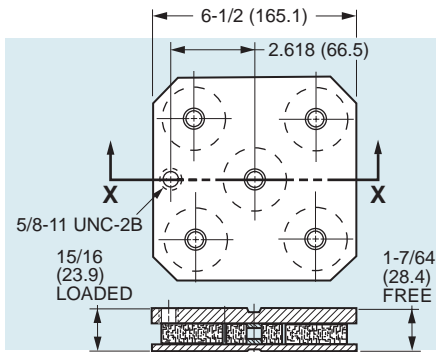


Steel Mesh Mounts – To 20000 lbs.

www.vibrationmounts.com Phone: 516.328.3662 Fax: 516.328.3365

- **MATERIAL:** Mounting Plates – Mild Steel, Painted
Isolators – Knitted Stainless Steel Mesh

- **FOR COMPRESSION LOADS OF 1000 TO 20000 POUNDS (453 TO 9072 kgf)**
- **FREESTANDING • CORROSIVE ENVIRONMENT**



NOTE: Dimensions in () are mm.

APPLICATIONS

- DESIGNED PRINCIPALLY FOR HEAVY-DUTY PUNCH AND PANEL PRESSES
- LARGE MACHINE TOOLS
- ROCK CRUSHERS

FLOOR MOUNTING

To support heavy loads, the mounts are grouped together on a spreader plate. The spreader plate should be made the same size as the floor bearing area of the base. Fasten the mounts to the spreader plate by the 5/8 tapped hole provided, then fasten the spreader to the machine base.

EXAMPLE:

Total Weight of Machine = 65 TONS

$$\frac{\text{Machine Weight}}{\text{Capacity of Mount}} = \frac{65}{9} = 7.22 \text{ (use 8 mounts)}$$

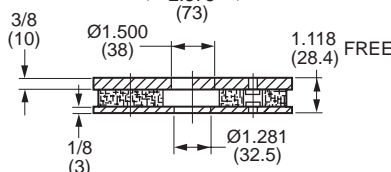
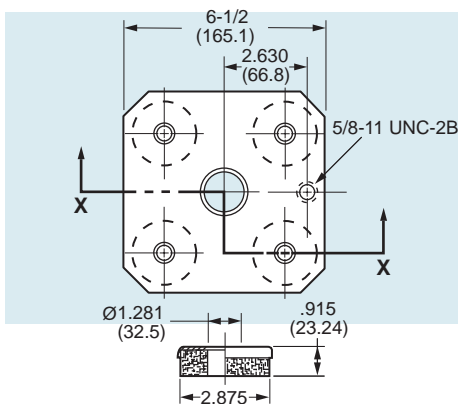
Catalog Number	Static Load Range	
	lb.	kgf
V10Z33-1133-1	1000 – 2000	453 – 907
V10Z33-1133-2	2000 – 5000	907 – 2268
V10Z33-1133-3	5000 – 10000	2268 – 4536
V10Z33-1133-4	10000 – 20000	4536 – 9072



Steel Mesh Mounts – To 16000 lbs.

- **MATERIAL:** Mounting Plates – Mild Steel, Painted
Isolators – Knitted Stainless Steel Mesh

- **FOR COMPRESSION LOADS OF 800 TO 16000 POUNDS (363 TO 7257 kgf)**
- **FLOOR MOUNTED • CORROSIVE ENVIRONMENT**



SECTION X-X

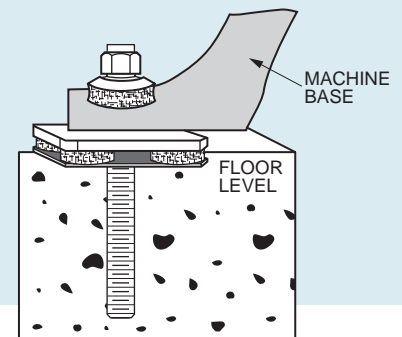
NOTE: Dimensions in () are mm.

APPLICATIONS

Designed for heavy machine tools, this low profile mount serves the dual purpose of effectively isolating machine vibration while preventing movement by holding firmly on its base.

FLOOR MOUNTING

It is important that the stud is firmly fixed into the floor before the machine is bolted down. In the illustration, Rawbolt "studding" has been used, but foundation anchoring hardware is not provided with the mount. For use on level surfaces only. Use 1.0 (25.4) maximum diameter anchoring studs.



Catalog Number	Static Load Range	
	lb.	kgf
V10Z34-1139-1	800 – 1600	363 – 726
V10Z34-1139-2	1600 – 4000	726 – 1814
V10Z34-1139-3	4000 – 8000	1814 – 3628
V10Z34-1139-4	8000 – 16000	3628 – 7257