

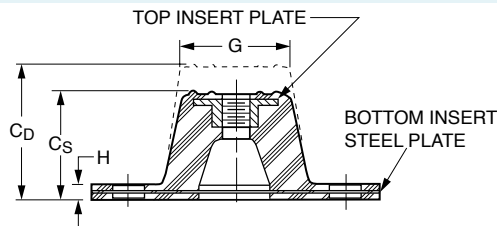
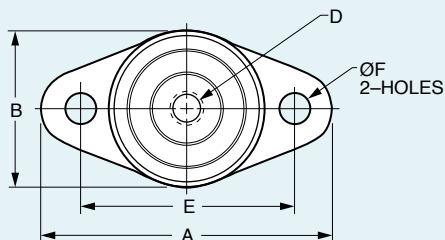


# Diamond Base Mounts

www.vibrationmounts.com Phone: 516.328.3662 Fax: 516.328.3365

- **MATERIAL:** Plates – Steel  
Isolator – Oil-Resistant Neoprene or Durulene™

- **FOR LOADS OF 45 TO 1100 POUNDS (20.4 TO 499 kgf)**



## APPLICATIONS

- INDUSTRIAL
- AIR CONDITIONING
- BUSINESS MACHINES
- **CHOOSE DURULENE FOR THE FOLLOWING**
- ROOFTOP – Extreme heat or cold, direct sunlight
- INDOOR/OUTDOOR – Severe weather
- OZONE-EMITTING ELECTRICAL EQUIPMENT

## FEATURES:

- Threaded Plate Molded into Mounting
- Nonskid Base & Top Surface

**TEMPERATURE RANGE:** Neoprene – -40°F to +180°F (-40°C to +82.2°C)  
Durulene™ – -65°F to +250°F (-40°C to +121.1°C)

Catalog Number*		Graph Ref.Δ	Max. Load lb. (kgf)	A	B	Height C		D	E	F	G	H	Max. Static Deflection	
Neoprene	Durulene™					Standard Cs	Double Cd						Standard	Double
V10Z52-FA0045 □	V10Z52-FA0045 □ D	1S 1D	45 (20.4)	3-1/8 (79.4)	1-3/4 (44.5)	1 (25.4)	1-1/4 (31.8)	5/16-18	2-3/8 (60.3)	11/32 (8.7)	1-1/4 (31.8)	3/16 (4.8)	.20 (5.08)	.40 (10.16)
V10Z52-FA0070 □	V10Z52-FA0070 □ D	3S 3D	70 (31.8)											
V10Z52-FA0120 □	V10Z52-FA0120 □ D	5S 5D	120 (54.4)											
V10Z52-FB0135 □	V10Z52-FB0135 □ D	6S 6D	135 (61.2)											
V10Z52-FB0240 □	V10Z52-FB0240 □ D	7S 7D	240 (108.9)	3-7/8 (98.4)	2-3/8 (60.3)	1-1/4 (31.8)	1-3/4 (44.5)	3/8-16	3 (76.2)	11/32 (8.7)	1-3/4 (44.5)	7/32 (5.6)	.25 (6.35)	.50 (12.7)
V10Z52-FB0380 □	V10Z52-FB0380 □ D	9S 9D	380 (172.4)											
V10Z52-FB0550 □	V10Z52-FB0550 □ D	10S 10D	550 (249.5)											
V10Z52-FC0525 □	V10Z52-FC0525 □ D	11S 11D	525 (238.1)											
V10Z52-FC0750 □	V10Z52-FC0750 □ D	13S 13D	750 (340.2)	5-1/2 (139.7)	3-3/8 (85.7)	1-3/4 (44.5)	2-7/8 (73)	1/2-13	4-1/8 (104.8)	11/32 (8.7)	2-1/2 (63.5)	1/4 (6.4)	.25 (6.35)	.50 (12.7)
V10Z52-FC1100 □	V10Z52-FC1100 □ D	14S 14D	1100 (499)											

\*To complete the Catalog Number, specify:

□ for Standard Deflection  
or □ D for Double Deflection

Δ For Load Deflection Graphs see page 2-17

Additional load ratings available on special order.

**NOTE:** Dimensions in ( ) are mm.

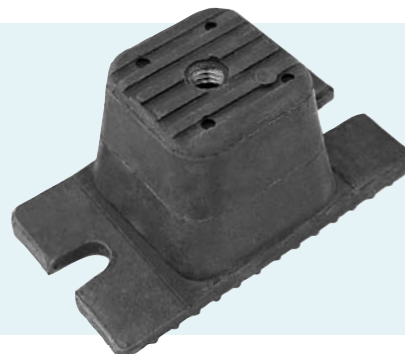
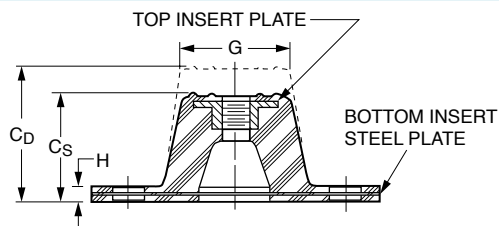
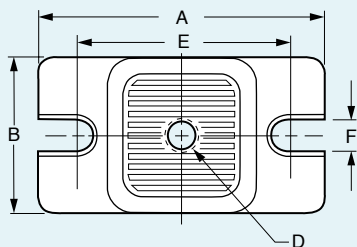


# Rectangular Base Mounts

www.vibrationmounts.com Phone: 516.328.3662 Fax: 516.328.3365

- **MATERIAL:** Plates – Steel  
Isolator – Oil-Resistant Neoprene or Durulene™

- **FOR LOADS OF 110 TO 4000 POUNDS (49.9 TO 1814.4 kgf)**



## APPLICATIONS

- INDUSTRIAL
- AIR CONDITIONING
- BUSINESS MACHINES

## CHOOSE DURULENE FOR THE FOLLOWING

- ROOFTOP – Extreme heat or cold, direct sunlight
- INDOOR/OUTDOOR – Severe weather
- OZONE-EMITTING ELECTRICAL EQUIPMENT

## FEATURES:

- Threaded Plate Molded into Mounting
- Nonskid Base & Top Surface

**TEMPERATURE RANGE:** Neoprene – -40°F to +180°F (-40°C to +82.2°C)  
Durulene™ – -65°F to +250°F (-53.9°C to +121.1°C)

Catalog Number*		Graph Ref. <sup>Δ</sup>	Rated Load lb. (kgf)	A	B	Height C		D	E	F	G	H	Max. Static Deflection	
Neoprene	Durulene™					Standard C <sub>s</sub>	Double C <sub>d</sub>						Standard	Double
§ V10Z53-FB0110 □	—	AS	110 (49.9)										.40 (10.16)	
§ V10Z53-FB0260S	—	AD	260 (117.9)	3-3/4 (95.3)	2-1/8 (54)	1-1/8 (28.6)	1-7/8 (47.6)	3/8-16	3 (76.2)	3/8 (9.5)	1-9/16 (39.7)	1/4 (6.4)	.20 (5.08)	—
§ V10Z53-FB0470 □	—	CS	470 (213.2)										.40 (10.16)	
§ V10Z53-FC0500S	—	DS	500 (226.8)											
§ V10Z53-FC0720S	—	DD	720 (326.6)	5 (127)	3-1/16 (77.8)	1-5/8 (41.3)	—	1/2-13	4 (101.6)	9/16 (14.3)	2-5/16 (58.7)	3/8 (9.5)	.25 (6.35)	—
§ V10Z53-FC1120 □	—	FS	1120 (508)				2-3/4 (69.9)						.50 (12.7)	
V10Z53-FD1500 □	V10Z53-FD1500 □ D	GS	1500 (680.4)											
V10Z53-FD2250 □	V10Z53-FD2250 □ D	ID	2250 (1020.6)	6-1/4 (158.8)	4-5/8 (117.5)	1-5/8 (41.3)	2-3/4 (69.9)	1/2-13	5 (127)	9/16 (14.3)	3 (76.2)	3/8 (9.5)	.25 (6.35)	.50 (12.7)
V10Z53-FD3000 □	V10Z53-FD3000 □ D	JS	3000 (1360.8)											
V10Z53-FD4000 □	V10Z53-FD4000 □ D	JD	4000 (1814.4)											

\* To complete the Catalog Number, specify:

§ for **Standard Deflection**  
or **D** for **Double Deflection**

Additional load ratings available on special order.

**NOTE:** Dimensions in ( ) are mm.

<sup>Δ</sup> For Load Deflection Graphs see page 2-17

§ To be discontinued when present stock is depleted.

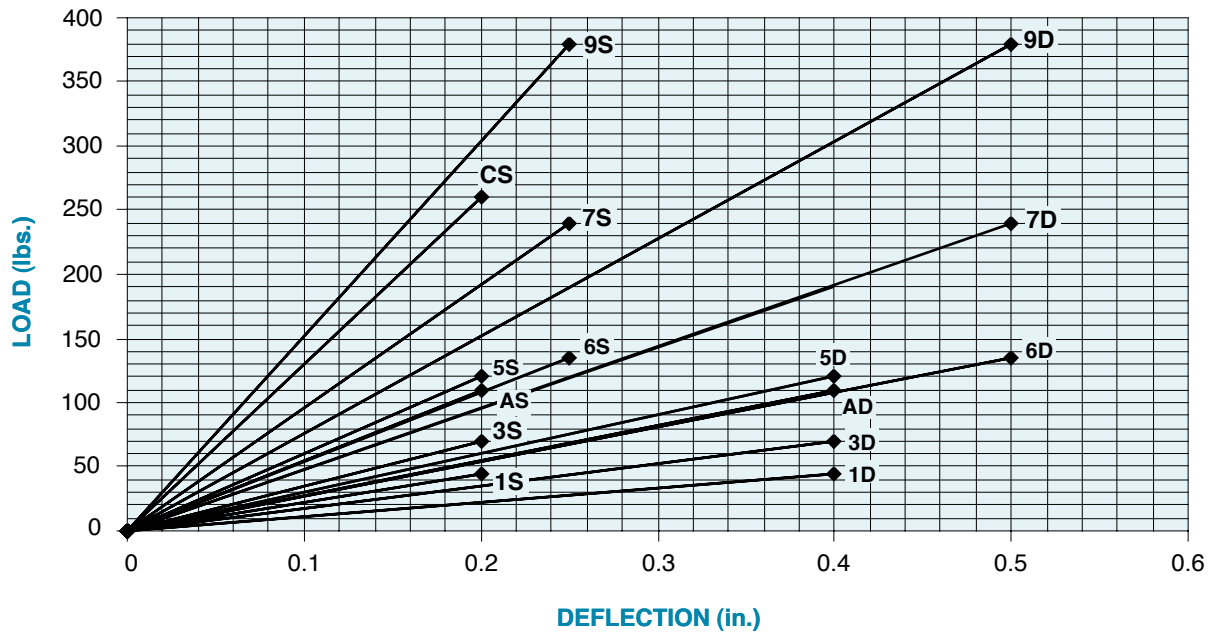


# Load Deflection for Base Mounts

www.vibrationmounts.com Phone: 516.328.3662 Fax: 516.328.3365

For Catalog Numbers V10Z52-... and V10Z53-... on pages 2-15 and 2-16.

## LOAD VS. DEFLECTION



## LOAD VS. DEFLECTION

