

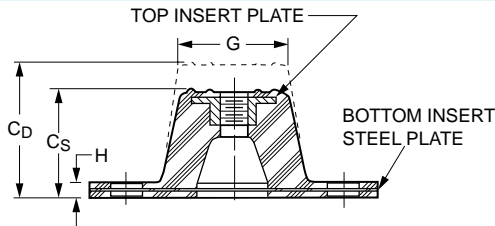
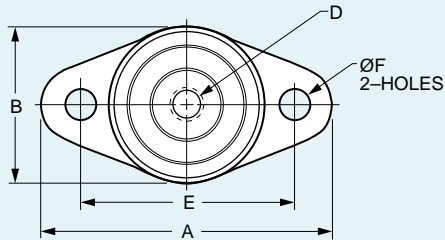


Diamond Base Mounts

www.vibrationmounts.com Phone: 516.328.3662 Fax: 516.328.3365

- **MATERIAL:** Plates – Steel
Isolator – Oil-Resistant Neoprene or Durulene™

- **FOR LOADS OF 45 TO 1100 POUNDS (20.4 TO 499 kgf)**



APPLICATIONS

- INDUSTRIAL
- AIR CONDITIONING
- BUSINESS MACHINES
- **CHOOSE DURULENE FOR THE FOLLOWING**
- ROOFTOP – Extreme heat or cold, direct sunlight
- INDOOR/OUTDOOR – Severe weather
- OZONE-EMITTING ELECTRICAL EQUIPMENT

FEATURES:

- Threaded Plate Molded into Mounting
- Nonskid Base & Top Surface

TEMPERATURE RANGE: Neoprene – -40°F to +180°F (-40°C to +82.2°C)
Durulene™ – -65°F to +250°F (-40°C to +121.1°C)

Catalog Number*		Graph Ref.	Max. Load lb. (kgf)	A	B	Height C		D	E	F	G	H	Max. Static Deflection	
Neoprene	Durulene™					Standard Cs	Double Cd						Standard	Double
V10Z52-FA0045 □	V10Z52-FA0045 □D	1S 1D	45 (20.4)	3-1/8 (79.4)	1-3/4 (44.5)	1 (25.4)	1-1/4 (31.8)	5/16-18	2-3/8 (60.3)	11/32 (8.7)	1-1/4 (31.8)	3/16 (4.8)	.20 (5.08)	.40 (10.16)
V10Z52-FA0070 □	V10Z52-FA0070 □D	3S 3D	70 (31.8)											
V10Z52-FA0120 □	V10Z52-FA0120 □D	5S 5D	120 (54.4)											
V10Z52-FB0135 □	V10Z52-FB0135 □D	6S 6D	135 (61.2)	3-7/8 (98.4)	2-3/8 (60.3)	1-1/4 (31.8)	1-3/4 (44.5)	3/8-16	3 (76.2)	11/32 (8.7)	1-3/4 (44.5)	7/32 (5.6)	.25 (6.35)	.50 (12.7)
V10Z52-FB0240 □	V10Z52-FB0240 □D	7S 7D	240 (108.9)											
V10Z52-FB0380 □	V10Z52-FB0380 □D	9S 9D	380 (172.4)											
V10Z52-FB0550 □	V10Z52-FB0550 □D	10S 10D	550 (249.5)	5-1/2 (139.7)	3-3/8 (85.7)	1-3/4 (44.5)	2-7/8 (73)	1/2-13	4-1/8 (104.8)	11/32 (8.7)	2-1/2 (63.5)	1/4 (6.4)	.25 (6.35)	.50 (12.7)
V10Z52-FC0525 □	V10Z52-FC0525 □D	11S 11D	525 (238.1)											
V10Z52-FC0750 □	V10Z52-FC0750 □D	13S 13D	750 (340.2)											
V10Z52-FC1100 □	V10Z52-FC1100 □D	14S 14D	1100 (499)											

*To complete the Catalog Number, specify:
[S] for Standard Deflection
or [D] for Double Deflection
For Load Deflection Graphs see page 2-17

Additional load ratings available on special order.

NOTE: Dimensions in () are mm.

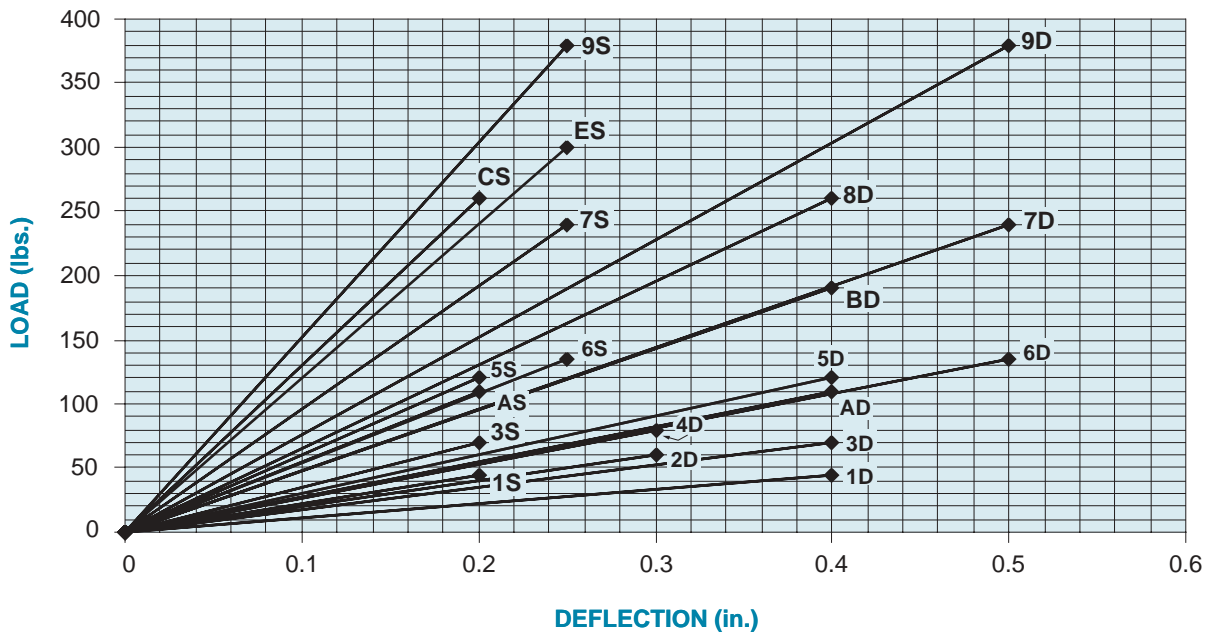


Load Deflection for Neoprene Base Mounts

www.vibrationmounts.com Phone: 516.328.3662 Fax: 516.328.3365

For Catalog Numbers V10Z52-... and V10Z53-... on pages 2-15 and 2-16.

LOAD VS. DEFLECTION



LOAD VS. DEFLECTION

